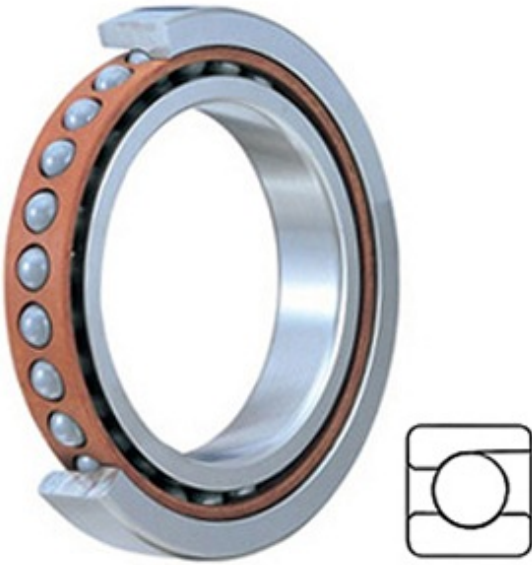




Precision Parts Co., Ltd.

0.984 Inch | 25 Millimeter x 1.654 Inch | 42 Millimeter x 0.354 Inch | 9 Millimeter TIMKEN 2MV9305WI SUL Precision Ball Bearings



Bearing No. 2MV9305WI SUL

2MV9305WI SUL Bearing 2D drawings and 3D CAD models

Category	Precision Ball Bearings
Inventory	0.0
Manufacturer Name	TIMKEN
Minimum Buy Quantity	N/A
Weight	0.055
Product Group	B04270
Enclosure	Open
Precision Class	ABEC 7 ISO P4
Material - Ball	Steel
Number of Bearings	1 (Single)
Contact Angle	15 Degree
Preload	Light
Raceway Style	1 Rib Outer Ring
Cage Material	Phenolic
Rolling Element	Ball Bearing
Mounting Arrangement	Universal
Flush Ground	Yes
Inch - Metric	Metric
Other Features	Single Row Angular Contact Super High Precision
Long Description	25MM Bore; 42MM Outside Diameter; 9MM Width; Open Enclosure; ABEC 7 ISO P4 Precision; Steel Ball Material; 1 (Single) Bearings; 15 Degree



Precision Parts Co., Ltd.

	Contact Angle; Phenolic Cage Material; 1 Rib Outer Ring Race
Category	Precision Ball Bearings
UNSPSC	31171531
Harmonized Tariff Code	8482.10.50.28
Noun	Bearing
Keyword String	Angular Contact Ball
Manufacturer URL	http://www.timken.com
Manufacturer Item Number	2MV9305WI SUL
Weight / LBS	0.121
D	1.654 Inch 42 Millimeter
d	0.984 Inch 25 Millimeter
B	0.354 Inch 9 Millimeter